



eNVy Rear Step Install

593-0015-00

Safety:

- Ensure that the UTV is safely parked on level ground with the ignition off.
- Wear all appropriate PPE for the following procedures.

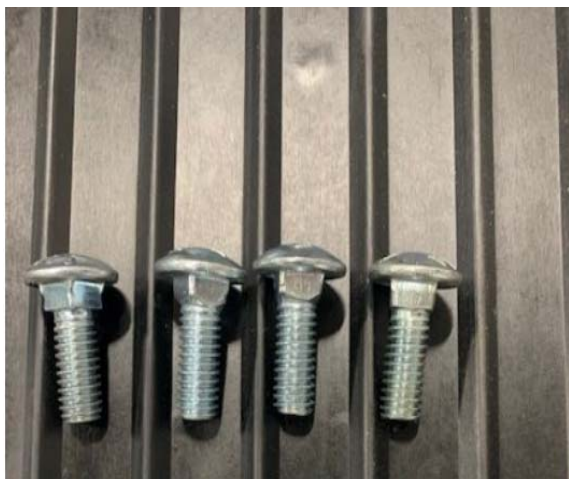
Note:

- Leave all hardware loose until the entire assembly is in its final position.



Step 1-

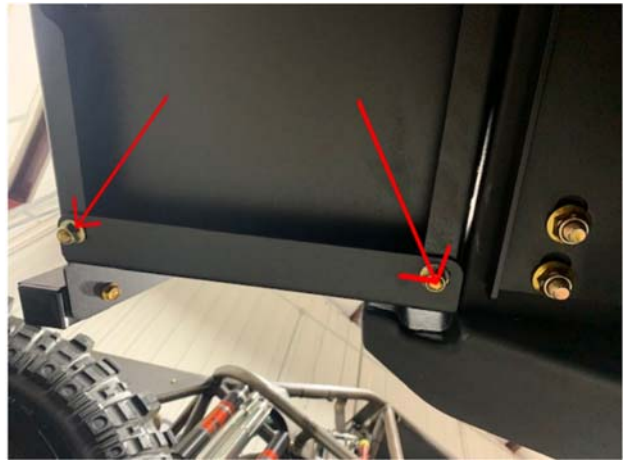
- Ensure that all Hardware is provided before starting the install.
- 4-3/8x1" Carriage Bolts.



eNVy Rear Step Install

593-0015-00

- Locate the two nuts on the underside of the machine.
- Here are two pictures of the nuts under the rear platform.



- Remove the nuts on the underside.
- (Do Not Lose These Nuts)
- Go to the top and swap out your bolts with the bolts from the hardware kit.
- These bolts will align with the holes on the actual Rear Step.
- Place the step aligning with all four bolts. Use the locknuts Retained from the last step to secure the step to the machine.



- Once everything is tight and in place you have one last step.
- ENJOY!!

